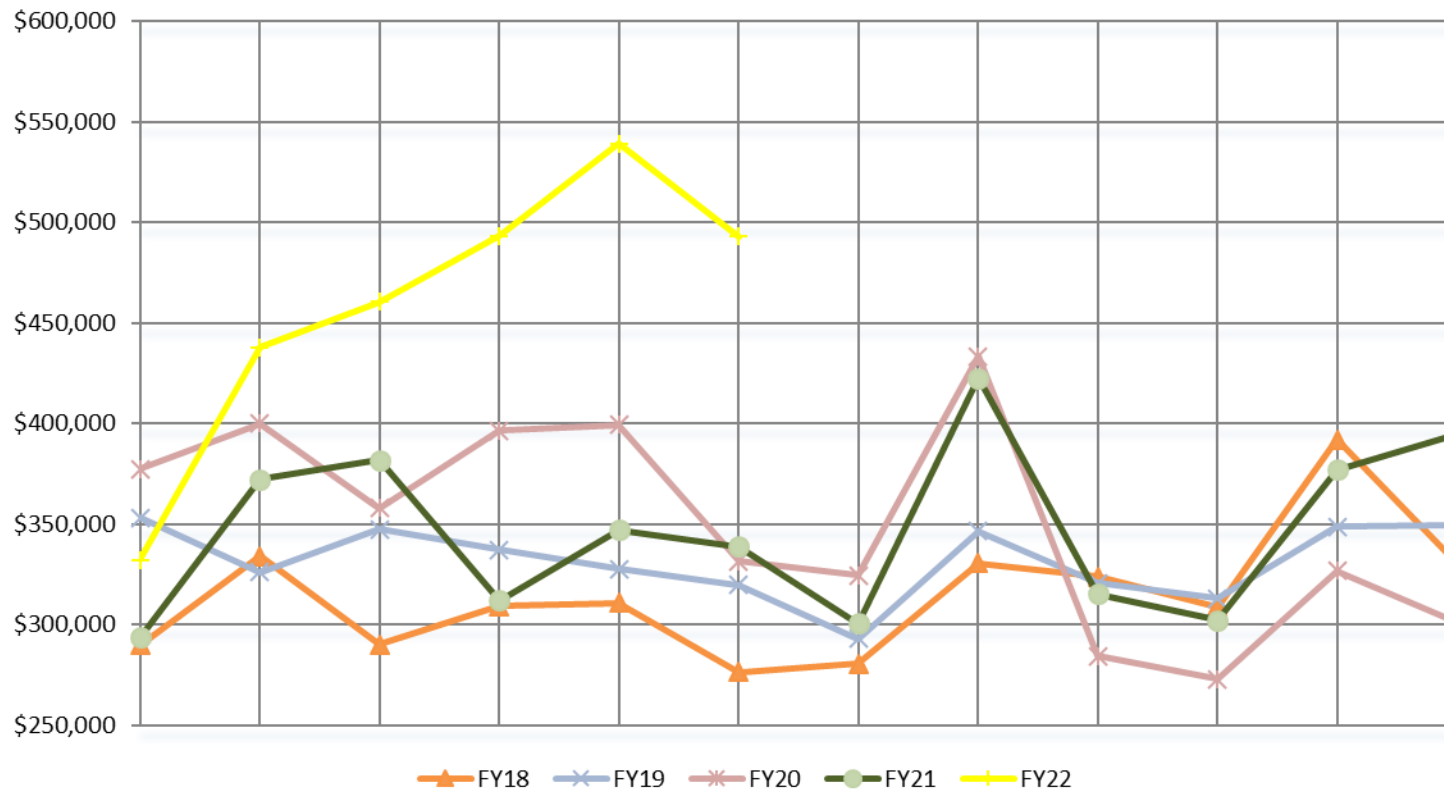


CITY OF AZTEC Gross Receipts Taxes: Cash Basis Fiscal Year 22: December 2021

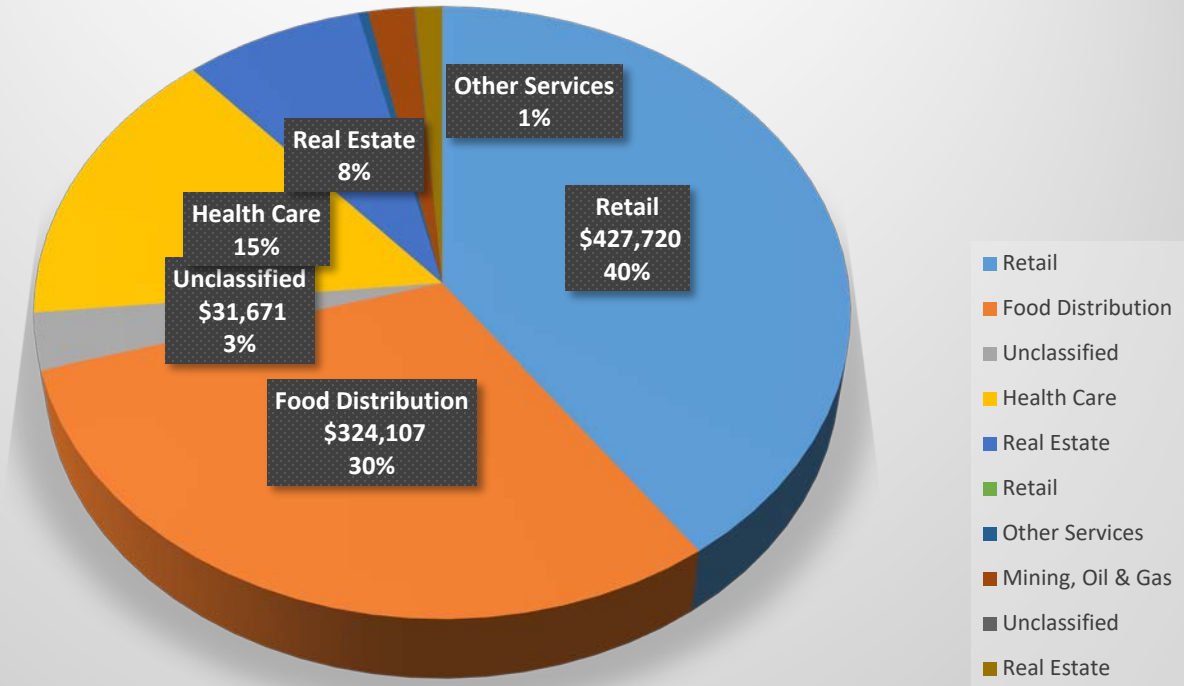
TOTAL GROSS RECEIPTS DISTRIBUTION BY MONTH

May 2018 Distribution includes Food Hold Harmless Correction for March 2018



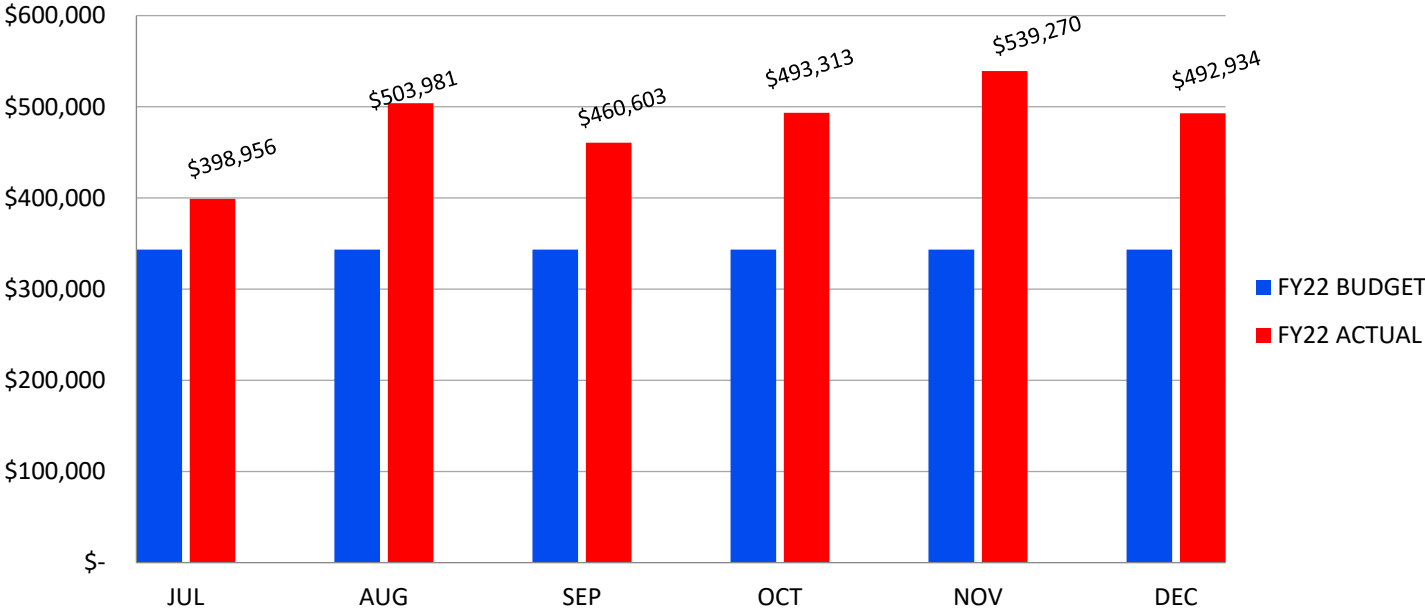
	FY18	FY19	FY20	FY21	FY22
Annual GRT Budget	\$ 3,213,457	\$ 3,671,295	\$ 3,938,375	\$ 2,927,386	\$ 3,817,399
JULY	289,872	353,016	377,303	293,578	332,039
AUGUST	333,921	326,134	400,062	372,268	437,964
SEPTEMBER *	290,183	347,278	357,951	381,806	460,603
OCTOBER	309,303	337,098	396,357	312,104	493,313
NOVEMBER	310,838	327,578	399,259	347,165	539,270
DECEMBER	276,324	319,662	331,610	338,725	492,934
JANUARY	280,608	292,887	324,326	300,437	
FEBRUARY	330,639	346,561	433,570	422,648	
MARCH	323,685	320,524	284,335	315,156	
APRIL	308,710	312,877	272,794	302,125	
MAY	391,951	348,566	326,726	377,034	
JUNE	330,205	349,743	301,143	394,984	
Total Distribution	\$ 3,776,238	\$ 3,981,925	\$ 4,205,436	\$ 4,158,028	\$ 2,756,122
% of Budget Received	117%	108%	107%	142%	72%
Average Distribution	\$ 314,687	\$ 331,827	\$ 350,453	\$ 346,502	\$ 459,354
Change in Average from Previous Fiscal Year	7.3%	5.4%	5.6%	-1.1%	32.6%
Avg Monthly Receipts per 1/4%	\$ 21,407	\$ 21,376	\$ 22,208	\$ 20,855	\$ 32,069
Gross Receipts Tax Rate	8.000%	8.000%	8.250%	8.250%	8.250%
EFF 1/2019:		0.0825			
*As of September 2021 Internet Sales Tax distributed by the State has been discontinued and Internet Sales Revenues are included in the monthly distribution.					

FY 2021-2022 Gross Receipts Distribution by Sector



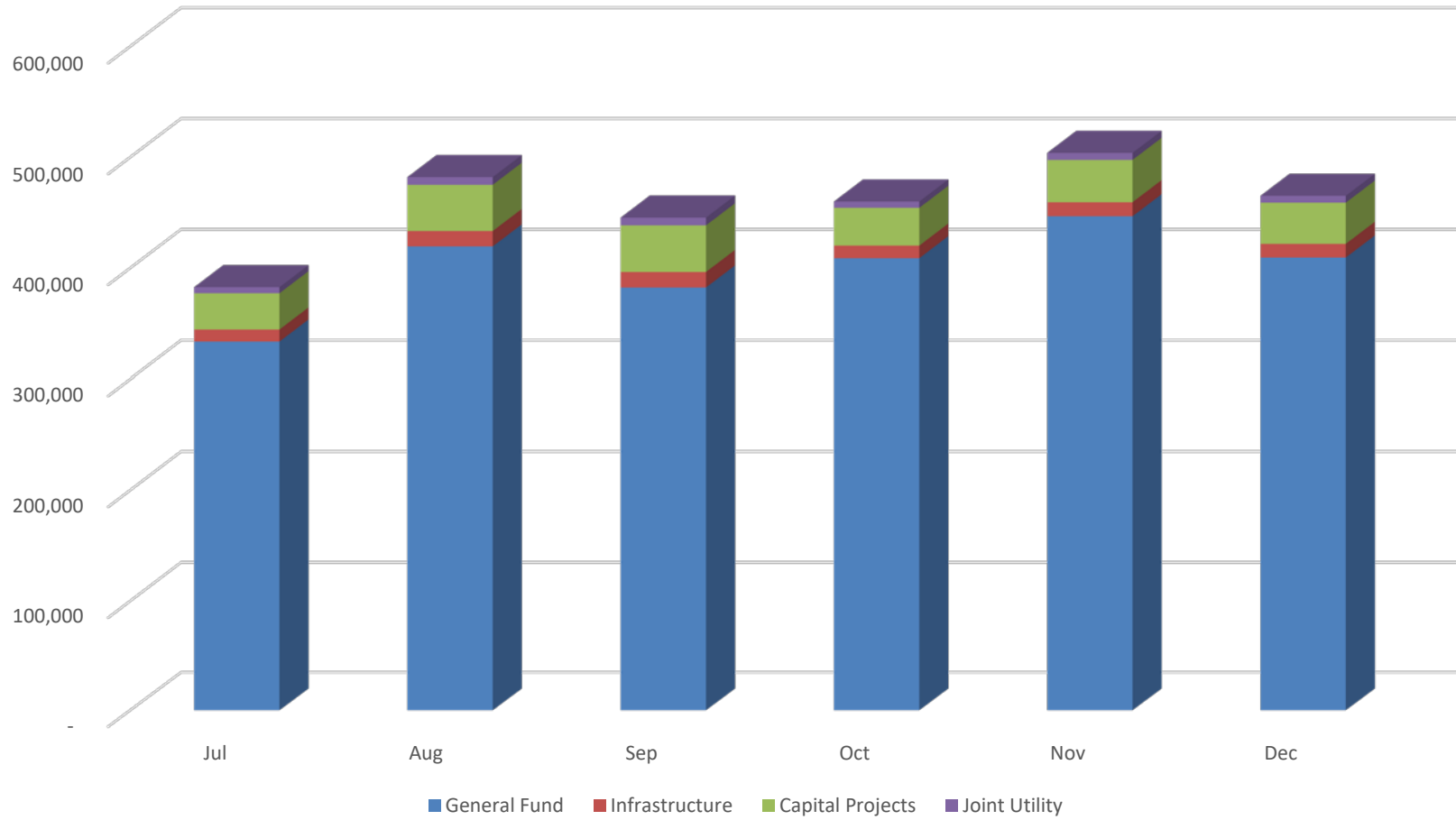
Other Sectors Includes:
Wholesale, Prof & Tech Services, Internet Sales, Agriculture, Art, Financial & Insurance Services, Education, Transportation, Utilities, Compensating Tax, Administrative & Support Services, Public Administration and Information Services

GROSS RECEIPTS MONTHLY DISTRIBUTION: CURRENT FISCAL YEAR BUDGET TO ACTUAL

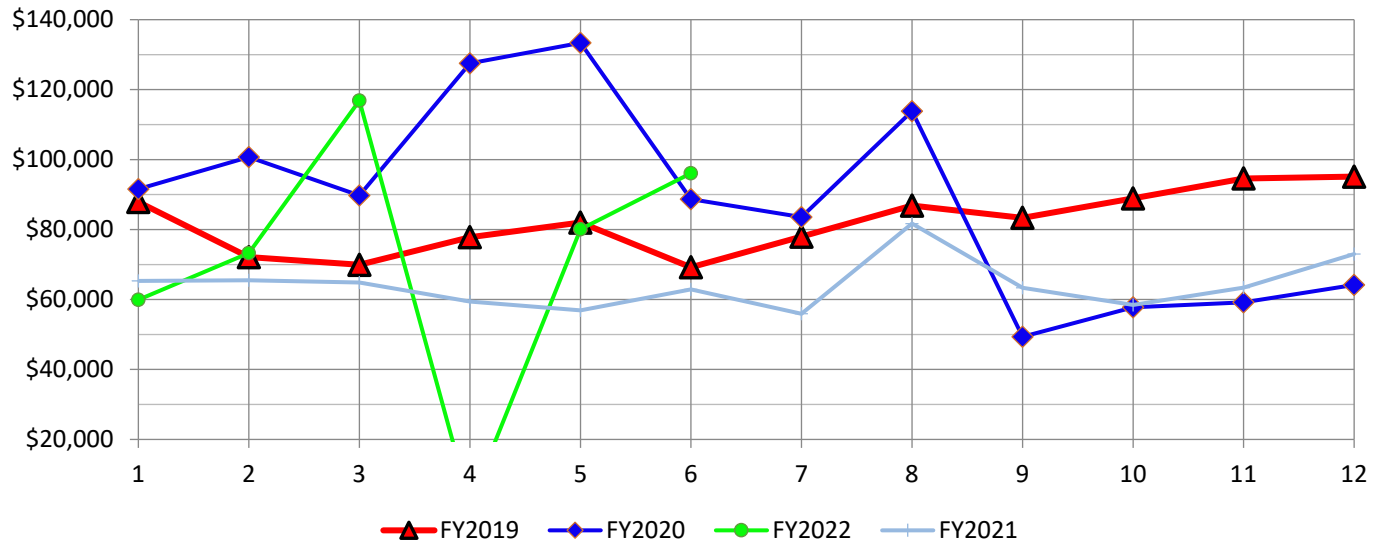


Amounts listed above bar graph are the actual monthly distribution for the current fiscal year.

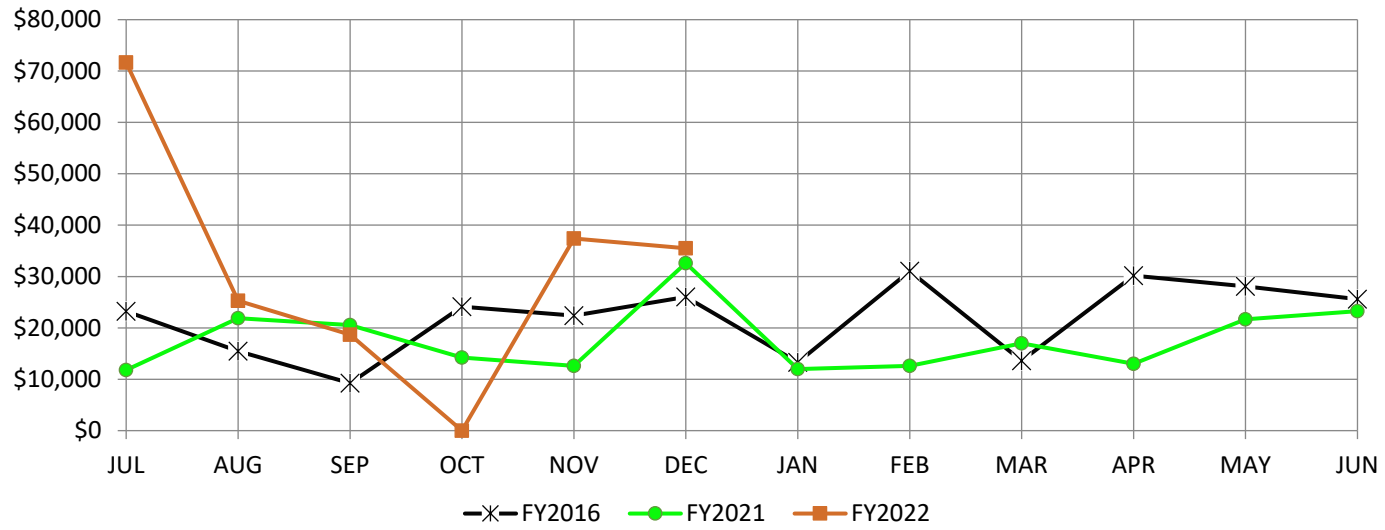
Gross Receipts Distribution by Fund



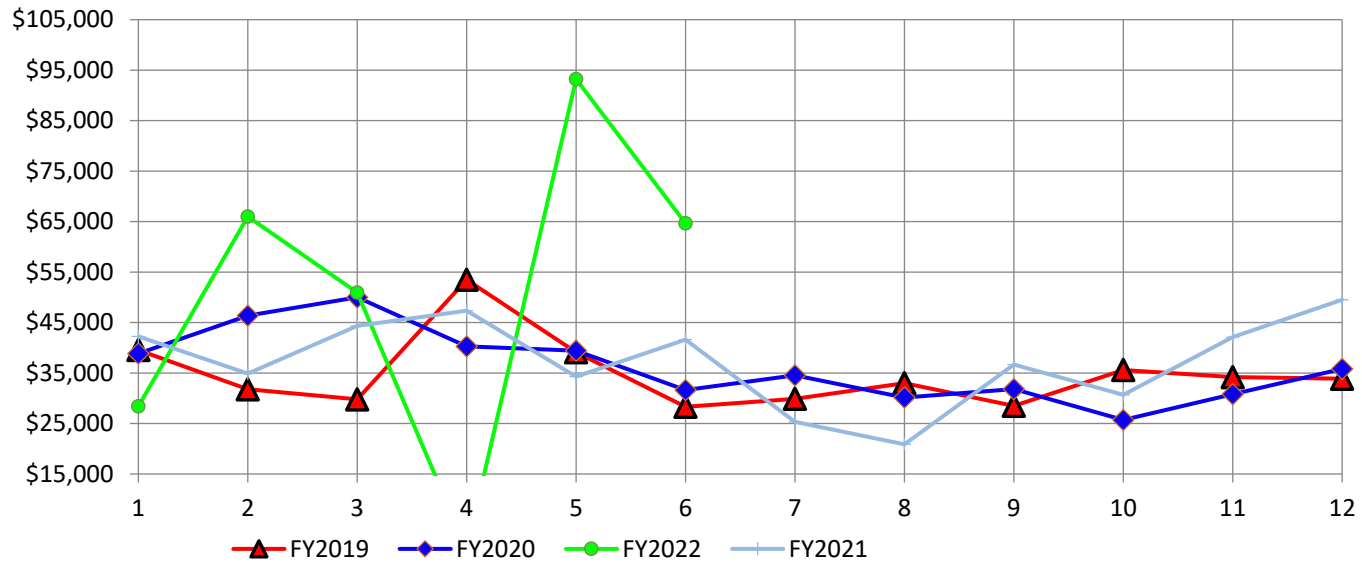
GROSS RECEIPTS MONTHLY DISTRIBUTION: RETAIL



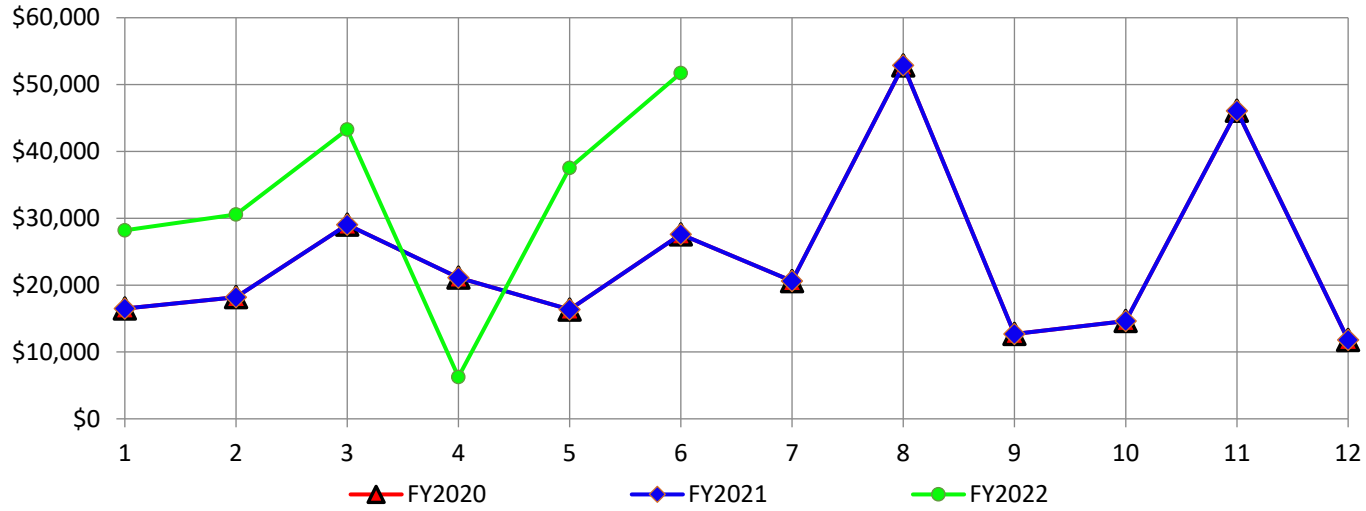
GROSS RECEIPTS MONTHLY DISTRIBUTION: CONSTRUCTION



GROSS RECEIPTS MONTHLY DISTRIBUTION: ACCOMMODATION & FOOD



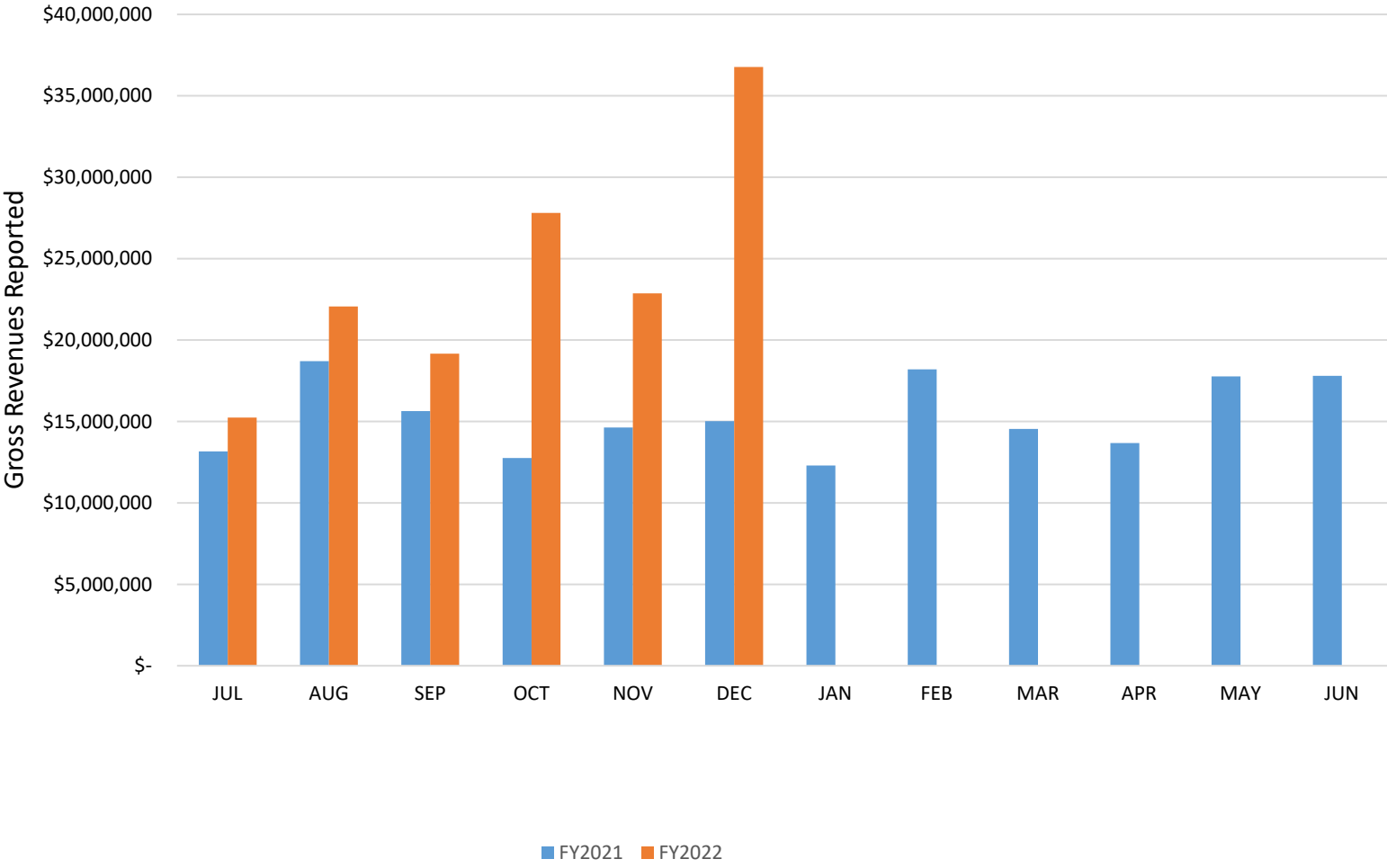
GROSS RECEIPTS MONTHLY DISTRIBUTION: HEALTH CARE AND MEDICAL DISTRIBUTION



**BUDGET TO ACTUAL
FIVE YEAR HISTORY & CURRENT FISCAL YEAR**

	FY17 ACTUAL	FY18 ACTUAL	FY19 ACTUAL	FY20 ACTUAL	FY21 BUDGET	FY21 ACTUAL	FY22 BUDGET	FY22 ACTUAL	DIFF. BUDGET TO ACTUAL (SHORT)	% of Change FY21 TO FY22 Actual (Less)
JUL	289,349	289,872	353,016	377,303	262,768	293,578	343,343	398,956	55,613	27.93%
AUG	320,332	333,921	326,134	400,062	278,307	372,268	343,343	503,981	160,639	32.92%
SEP	294,802	290,183	347,278	357,951	250,042	381,806	343,343	460,603	117,260	22.01%
OCT	261,118	309,303	337,098	396,357	274,443	312,104	343,343	493,313	149,971	45.72%
NOV	292,126	310,838	327,578	399,259	271,246	347,165	343,343	539,270	195,927	48.12%
DEC	302,172	276,324	319,662	331,610	231,771	338,725	343,343	492,934	149,591	46.50%

FY21 & FY22 GROSS REVENUES REPORTED



GRT Moving Average Estimate V. Actuals

