



Makers Sales and Marketing, LLC

HARTMAN PARK

COOPER LIGHTING

1/30/24



APPROVED

SIGNATURE _____

DATE _____

GENERAL NOTES

MSP50MSPAB - P1-P4

50 FT ROUND TAPERED STEEL POLE - ANCHOR BASE

INCLUDES:
GALVANIZING PER ASTM A 123
STANDARD ACCESS HAND HOLES
J HOOK FOR CABLE
INTERNAL CABLE GUIDE PROVIDED FOR POLES 50' OR ABOVE
STEEL TEMPLATE

(1) 6 FIXTURE TUBULAR CROSSARMS - PLATE TO PLATE MOUNT

BFDS FULL PREWIRE CROSSARMS, DROP CABLE, FUSED DISCONNECT.
MALE SO CORD
FIXTURE HARDWARE

DESIGN LOAD:
EPA = 15
90 MPH AASHTO 2013

WIND DISCLAIMER:
VIBRATIONS, HARMONIC DISTORTIONS, AND VORTEX SHEARING, ARE DIFFICULT TO PREDICT. FACTORS INFLUENCING THESE CONDITIONS
DEPEND ON MANY VARIABLES. AS SUCH, THE USER SHOULD MAINTAIN THE STRUCTURE ON A REGULAR SCHEDULE CHECKING FOR
EXCESSIVE VIBRATION, BOLT LOOSENING, OR STRUCTURAL DAMAGE. THE MSM WARRANTY SPECIFICALLY EXCLUDES FAILURE DUE TO
FATIGUE CAUSED BY THESE PHENOMENA. STEEL POLE ANCHOR BOLT NUTS SHALL BE CHECKED ANNUALLY TO VERIFY THEY STILL MEET
THE TORQUE SPECIFICATION .



2316 WEAVER ST.
HALTOM CITY, TX 76117
METRO (817) 834-5538
TOLL FREE (866) 724-4527
FAX (817) 831-6088

DATE:	1/30/24	REV.:	00	JOB NO.	N/A	SCALE:	NTS
DRAWING NUMBER:		DRAWN BY:		QUOTE NUMBER:			
GENERAL NOTES		DR		Q040523JV6r3			

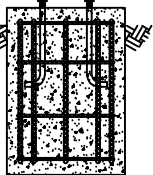
HARTMAN PARK
COOPER LIGHTING
P1-P4



50'

FUSED DISCONNECT
@ 10' & 0"

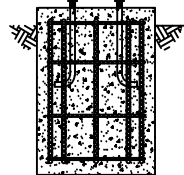
4" x 6" REINFORCE
HANDHOLE
ON BACKSIDE



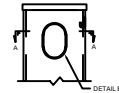
FRONT VIEW



CABLE GUIDE
4X6.5" HH

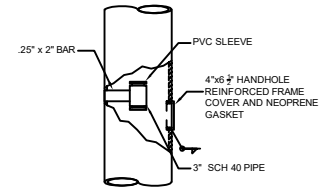


SIDE VIEW

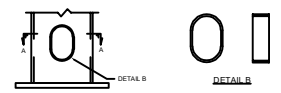


HANDHOLE COVER

3 X 5" REINFORCE HANDHOLE



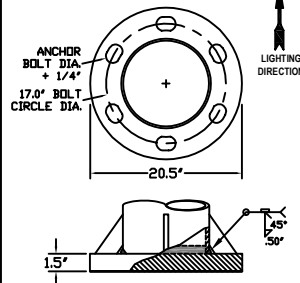
CABLE GUIDE



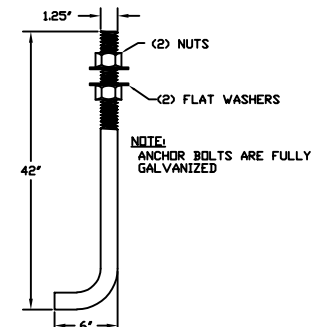
4 X 6 1/2" REINFORCE HANDHOLE

	BASE OD (in)	TOP OD (in)	WALL THC	LENGHT (ft)	WEIGHT (lbs)
SHAFT	12	5	.188	50	850

POLE DIMENSION



BASEPLATE



ANCHOR BOLT

COMPONENT	SPECIFICATION
POLE TOP	ASTM A572 GR. 65
POLE BOTTOM	ASTM A572 GR. 65
MISC. STEEL	ASTM A36
ANCHOR BOLTS	ASTM F1554 GR. 55
BASE PLATE	ASTM A572 GR. 50

GENERAL NOTES:

1. ALL HARDWARE TO BE GALVANIZED TO ASTM A153.
2. POLE ASSEMBLY TO BE GALVANIZED TO ASTM A123.
3. ALL WELDING TO CONFORM TO AWS D1.1 MOST RECENT EDITION.
4. DESIGN INCORPORATE GUST FACTOR PER REF CODE.
5. REFER TO GENERAL INSTALLATION INSTRUCTIONS PRIOR TO ASSEMBLY.

FINISH:	WIND SPEED:	DESIGN CRITERIA:
<input type="checkbox"/> GALVANIZED	<input type="checkbox"/> 80 MPH <input type="checkbox"/> 110 MPH	<input type="checkbox"/> AASHTO LTS 3 <input type="checkbox"/> IBC
<input type="checkbox"/> PAINTED	<input checked="" type="checkbox"/> 90 MPH <input type="checkbox"/> 120 MPH	<input checked="" type="checkbox"/> AASHTO LTS 6 <input type="checkbox"/> DSA
<input type="checkbox"/> PAINTED & GALV	<input type="checkbox"/> 100 MPH <input type="checkbox"/> ___ MPH	<input type="checkbox"/> ASCE 7-10 <input type="checkbox"/> UBC

MATERIAL SPECIFICATIONS

DATE: 1/30/24	REV:	CHECKED BY:	SCALE: NTS
DRAWING NUMBER: MSP50MSPAB	DRAWN BY: DR	QUOTE NUMBER: Q040523JV6r3	
MSM Makers Sales and Marketing, LLC			
PO BOX 14537 HALTOM CITY, TX 76117 METRO (817) 834-5538 TOLL FREE (866) 724-4527 FAX (817) 831-6088			

**HARTMAN PARK
COOPER LIGHTING
P1-P4**

